

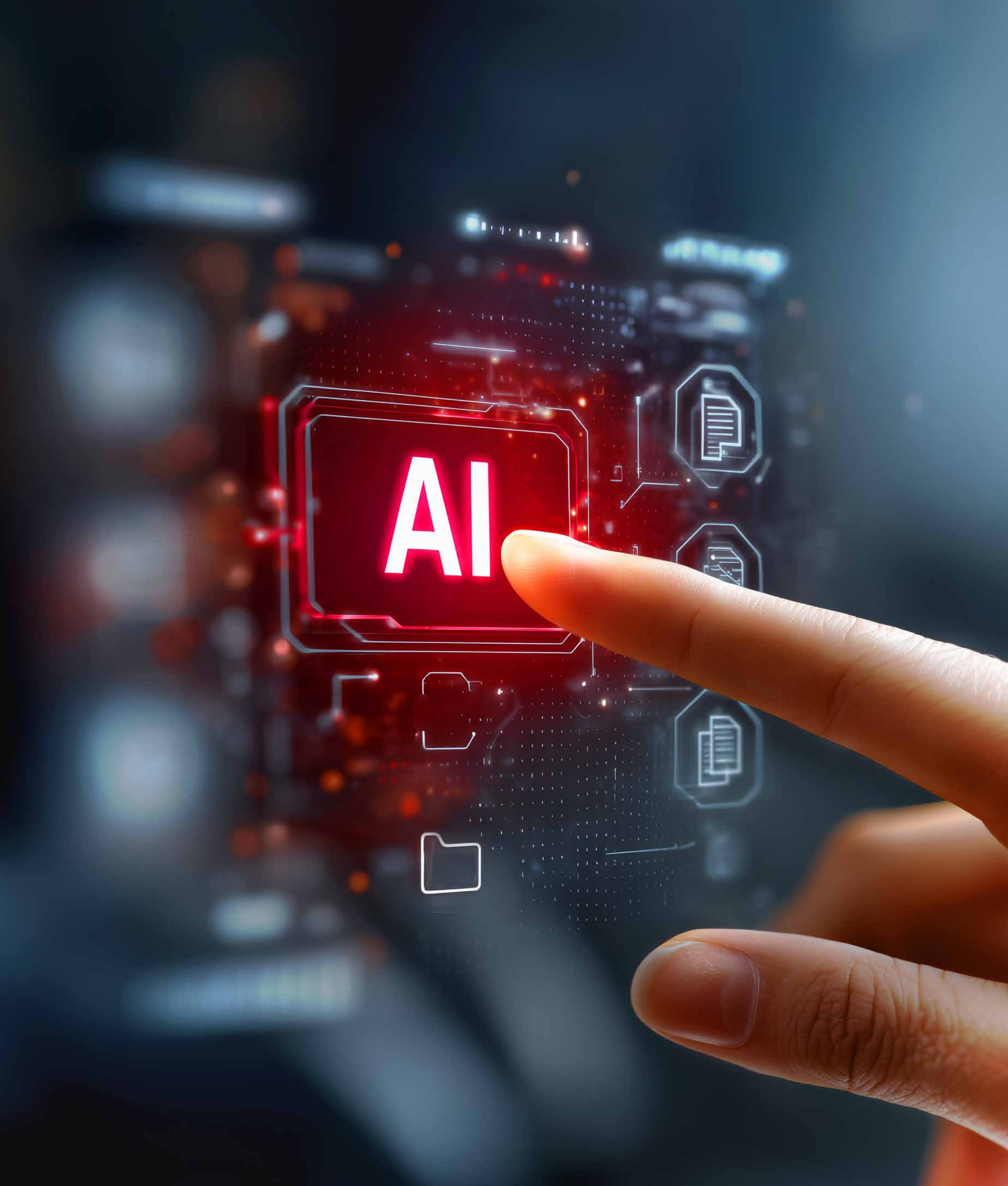


Beyond traditional networks

AI-Net by e&



Where speed meets intelligence



The vision: Network built for AI

AI-Net: Purpose-built for the AI era

AI has entered a new era, powering innovation, efficiency and intelligence across every business function. It's reshaping entire enterprises through real-time analytics, machine learning and automation. To realise its full potential, businesses need a smarter, more capable network.

AI-Net—the next evolution of data fabric

Unify AI tooling with your data estate to power scalable intelligence across the enterprise. As AI becomes pervasive across functions, the network must adapt—not just to support GPUs and edge processing, but to deliver outcomes: faster insights, smarter automation and accelerated innovation.

Is your network ready for AI?

AI demands more than what traditional networks can deliver. From government agencies to SMBs and large enterprises, organisations need networks built to handle new data demands enabling faster decisions, stronger security and greater resilience.

AI-Net from e& delivers exactly that: a high-performance network optimised for AI-driven enterprises now and in the future.



What is AI-Net?

AI-Net empowers your AI strategy through next-gen fibre connectivity

Enabling faster training, real-time AI performance and seamless integration across data centres, cloud and edge.

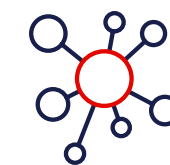
Key benefits



Ultra-high bandwidth: Designed for data-intensive AI tasks



Ultra-low latency: Powering real-time decisions



High availability: Resilient architecture for uninterrupted operations



Best-in-class security: Protecting your data, ensuring compliance



Strategic alignment

Three ways AI-Net aligns with your AI strategy

AI-Net transforms how enterprises handle AI workloads through a network that's intelligent, scalable and future-ready. Its intelligent data layer delivers real-time insights, turning information into faster, smarter decisions.

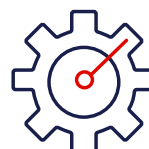
Why AI fabric needs a network to match



Massive data processing



Instant data processing (e.g., in smart factories)



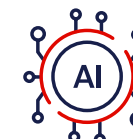
Real-time decision-making



Seamless cross-location model training



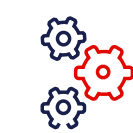
End-to-end data security



AI-powered CX



24/7 availability



Predictive maintenance

AI-Net connectivity options

- 01** AI Turbo Connect | Ultra-fast, high-capacity transport between hubs
- 02** AI Opti Connect (MOFN) | Long-distance, fully managed fibre



AI Connect – beyond traditional internet for AI

AI Connect is designed for businesses of all sizes, from SMBs exploring cloud-based tools to enterprises training advanced AI models. It delivers the speed, reliability and security that traditional internet can't match, ensuring optimal AI performance within and outside the UAE.

Key benefit



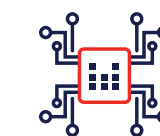
Optimised performance: Faster uploads for AI training, inference and collaboration



Direct, predictable routing: Reliable paths to AI platforms, LLMs and hyperscalers (UAE and global)



Seamless cloud access: Integration with leading AI and cloud providers



Guaranteed reliability: Enterprise-grade SLAs for uptime and low latency



Secure and compliant: UAE data sovereignty and regulatory alignment



AI Connect – beyond traditional internet for AI

Who is it for

- **SMBs** adopting AI tools to boost efficiency and stay competitive
- **Enterprises** developing, training or consuming AI models at scale
- **Startups and developers** needing reliable access to LLMs and cloud AI environments

Why e& for AI Connect?

With sovereign infrastructure, global reach and proven expertise, e& ensures businesses of all sizes get the right balance of performance, cost efficiency and compliance. AI Connect bridges the gap between SMB agility and enterprise-grade assurance, giving every business a future-ready AI foundation.



AI Turbo Connect

AI Turbo Connect – optical transport for AI workloads

AI Turbo Connect, powered by DWDM technology, is designed for government and business with high-volume AI requirements. It ensures reliable, high-speed transport across key data hubs supporting training, inference and real-time analytics.

Key Features



Ultra-low latency across distributed clusters



Scalable bandwidth: 100G, 400G



Tiered redundancy (Diversified/Protected/Unprotected)



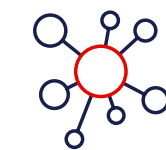
Flexible commercial models



Future-ready architecture for AI scale-up

AI Turbo Connect

Who is it for



Hyperscalers connecting major AI DCs



Enterprises with distributed AI and multi-cloud deployments



Cloud providers prioritising performance and security

Why e& for DWDM?

With over 4,000 km of ultra-low latency fibre and strategic investment in DWDM and edge infrastructure, e& is leading the future of AI-ready connectivity in the UAE. We don't just meet demand, we set the benchmark.

A futuristic, blurred image of a server room with glowing blue and red light trails. The letters 'AI' are prominently displayed in the center-left, overlaid on the digital interface.

AI Opti Connect (MOFN)

AI Opti Connect – fully managed long-haul fibre

AI Opti Connect (MOFN) is ideal for entities seeking long-haul fibre connectivity without in-house management complexity. It delivers dedicated performance with full-service operational support from e&.

Key features



Fully managed connectivity



Signal integrity over long distances



End-to-end health monitoring and maintenance



Custom SLAs (three to five years), flexible billing

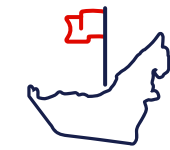


Seamless scalability for growing infrastructure

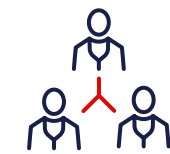


AI Opti Connect (MOFN)

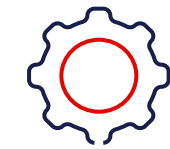
Who is it for



Hyperscalers linking Abu Dhabi, Dubai and Northern Emirates



Enterprises scaling infrastructure



Entities preferring managed solutions

Why e& for managed fibre?

e& combines deep expertise with end-to-end delivery for high-performance fibre solutions. AI Opti Connect minimises complexity so your AI ecosystem can scale without the burden of optical network management.

Let's connect

The background is a dark red gradient. On the right side, there is a large, intricate graphic composed of many small red dots. These dots form a stylized human face in profile, looking towards the left. The face's features, including the eye, nose, and mouth, are defined by the density and arrangement of the dots. To the right of the face, the dots form a swirling, tunnel-like structure that recedes into the distance, creating a sense of depth and motion. The overall effect is a high-tech, digital aesthetic.

Power your AI vision with AI-Net

AI-Net gives your enterprise the network edge it needs. From ultra-low latency to enterprise-grade reliability, it is purpose-built for AI transformation.

Contact your e& Sales Manager to explore the AI-Net solution that fits your vision.