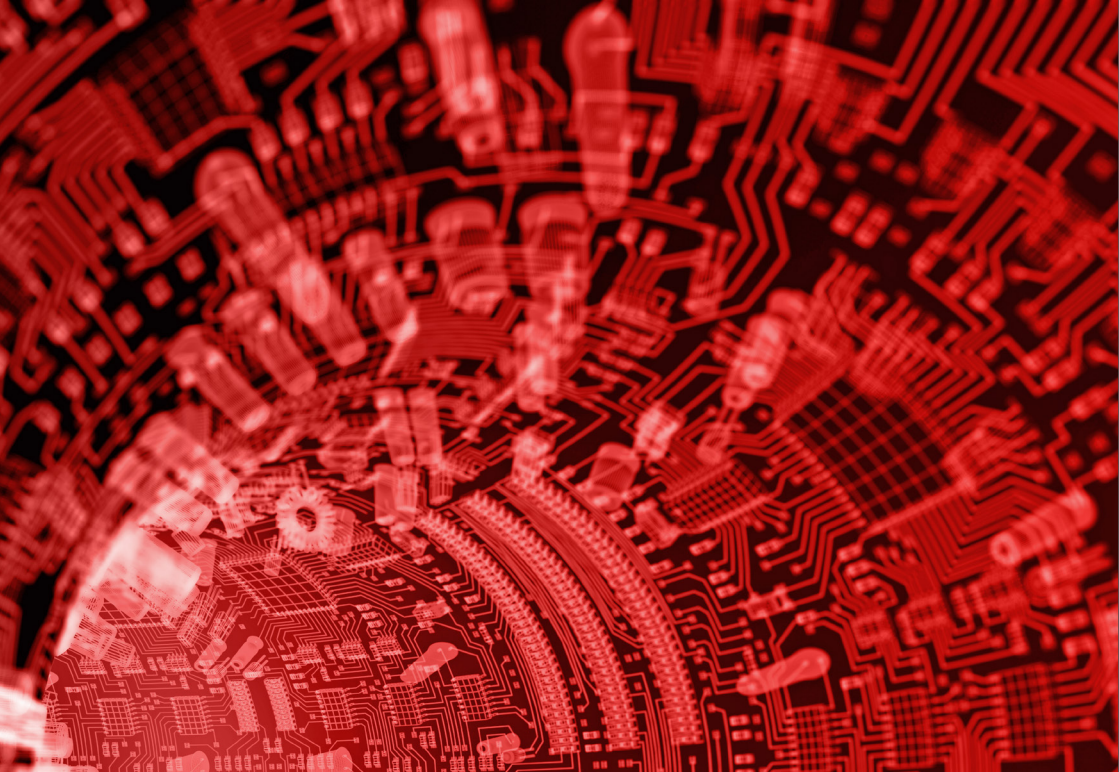




Service On Demand

Virtualise your Network with vCPE for ultimate Agility, Efficiency and Security features

Contact us:
intlsales-c&ws@eand.com



Service On Demand Solutions

With “Service On Demand” Solutions by Carrier & Wholesale division of e&, the future of network is here. SD-WAN services by e& is a technological focal point in driving digital transformation by combining the merits of ubiquitous public Internet connectivity and innovative cloud apps, thus enabling distributed organisations to better tackle business challenges and drive new efficiencies. It is deployed with a robust underlay network, MPLS/

Internet/4G LTE, which is powered through multiple options of network capacity, both on terrestrial cable routes as well as on undersea cable systems. Service On Demand Solution is the first choice for addressing MNC verticals such as BFSI, aviation, hospitality and other sectors to enhance operational efficiency and security by leveraging the key architectural building blocks as a way to get remote sites connected without the historic costs and delays of MPLS leased lines.

Benefits

Better Business Outcome



Reduce MPLS expenditure

Improve network uptime and resilience

Accelerate performance of cloud apps

Easy scalable options

Enable new apps and services at remote locations

Streamlined Operations



Manage multiple sites from one console

Know what's happening everywhere in your network

Protect all sites from Internet attacks with top-rated security

Respond to incidents in minutes, not hours

Bringing Enterprise Scale and Security to SD-WAN



e& is trusted by distributed organisations around the world to safely and efficiently connect and protect their remote sites, branches and office buildings. Our SD-WAN technology enables sites to seamlessly use multiple connections from different ISPs, secure each of those links with the industry's top-rated security and manage all of it together from one

console. Whether you're a global organisation that needs unified visibility and control, a growing business aspiring to have many locations or a smaller organisation that administers remote locations from a central office, e&'s Service on Demand helps reduce complexity to achieve new levels of operational efficiency.

Faster Deployment

Zero Touch Deployment

Save time and money by deploying Service On Demand solution to remote offices and branch locations without an on-site technician. Devices can automatically download their initial configuration from e&'s Installation Cloud, eliminating the need for manual set-up.

Less IT staff time spent

Smarter Policies & Updates

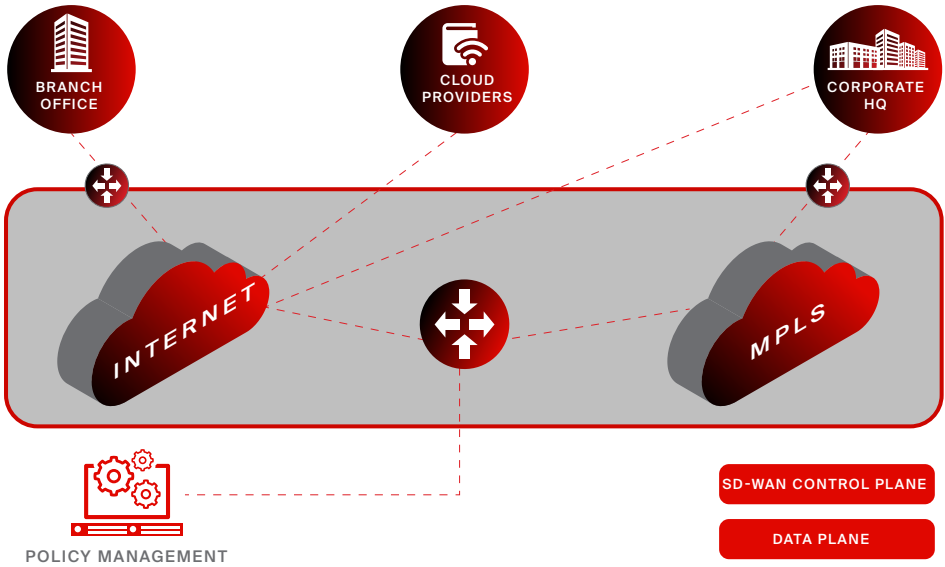
e&'s Smart Policies express your business processes in familiar terms, such as users, applications, locations and more. Easy grouping replaces hardcoded values, enabling policies to be dynamically reused throughout your network. Administrators can quickly update and publish policies to all affected devices, globally with a single click.

Faster Incident Support

Faster Incident Response

Managed Services offered by Carrier & Wholesale division of e& make it easy to visualise and analyse what's happening throughout your network. Network admins can interactively drill into the corresponding data to rapidly investigate patterns and anomalies and turn insights into immediate actions.

SD-WAN Architecture



Coverage Reach



MORE THAN
160
COUNTRIES
GLOBALLY



SD-WAN SERVICES

e& C&WS division has a broad portfolio of SD-WAN, which includes a basic package and extended VAS top-up services at a nominal additional price.

Network as Service



Design, build and manage ongoing operations of networks and devices from the edge to the core.

Managed Services

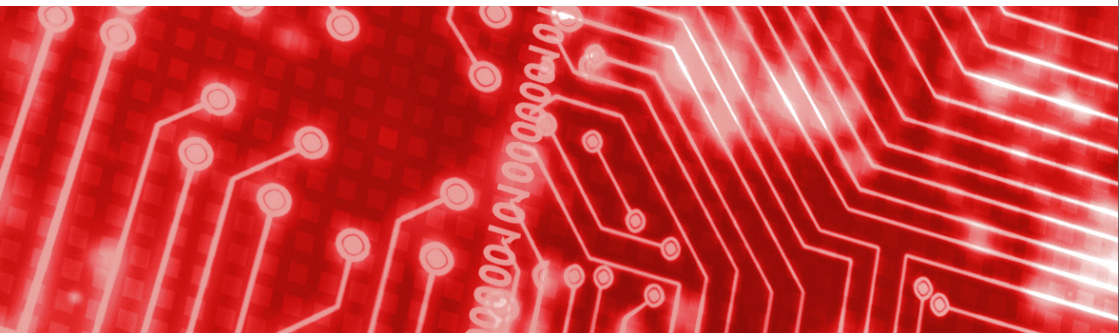


Managed SD-WAN devices and overlay network management allowing for BYO underlay network providers.

Value-added Services



Managed Services via vCPE enabling third party firewall features, DPI and application-based filtering, DDOS, bandwidth on demand, application performance monitoring & WAN optimisers are available at an additional cost.



How e& SD-WAN Works



e& SD-WAN is a cloud-first architecture that separates data and control planes, managed through the console. You can quickly establish an SD-WAN overlay fabric to connect data centres, branches, campuses and colocation facilities to improve network speed, security and efficiency.

Transport Independence



Deploy your WAN over any type of connection.



Internet



MPLS



LTE

Network Services



Choose from a full suite of on-demand services.



Firewall, IPS,
URL Filtering



Cloud Security



WAN
Optimisation

Endpoint Flexibility



Flexibility to deploy on a physical or a virtual platform.



Branch



Campus



Data Centre



Cloud

WHY CHOOSE e& CARRIER & WHOLESALE SERVICES FOR SD-WAN

Global Network Leader



e& C&WS has been delivering network services internationally for more than 40 years and has been recognised as the best by Global Business Outlook media, Telecoms World, Capacity Europe, Carrier Community and many more.

Local Support



Services are backed by an in-country 24x7 service desk, engineering and architectural team. Customers have access to a named account manager and service delivery manager.

DevOps Heritage



e& C&WS has been working with software-defined infrastructure since the start of the DevOps movement and has a depth of practical experience in Software-defined Networking (SDN) and Network Functions Virtualization (NFV) technology.

About Us

Committed towards extending the reach to the subscribers by acting as a catalyst for innovation and ensuring agility in all its solutions, Carrier & Wholesale division of e& is globally acclaimed as a Best Wholesale Provider many times in a row.

We

- Operate with the vision of “driving the Digital Future to empower societies”
- Offer comprehensive global solutions for wholesalers and OTTs worldwide (Mobile, Data, Voice, and Satellite)
- Are the **No 1 Telecoms Portfolio Brand** in the MENA region *
- Exceed \$14 Billion telecoms portfolio brand value*
- Are **TOP 3** strongest Telecoms Brand globally*

Connecting with us means a service provider can support its universal communication essentials and access the incomparable Tier 1 network reach.

*(Brand Finance Global 500 Report 2023)